

User Manual

Analog Video Intercom Kit for Villa

Model: VK07-C51L Kit & VK07-C52L Kit & VK10-C51L Kit

Version: 2.0

Table of Contents

	Page		Page
I.Indoor Monitor			
I.System Wiring Diagram	01	[Screen Adjustment]	11
A.Cable Selection Criteria	01	[Standby setting]	11
B.System Wiring Topology	01	[Brightness]	11
C.Definitions of Indoor Monitor Rear Interfaces and Wiring Diagram	02	vi.[Others]	11
D.CCTV Wiring Diagram	02	[Language]	11
II.Interface	03	[Extension ID setting]	11
A. Power-On Self-Test	03	[Gate unlock time]	11
B. Introduction to Main Interface Functions	03	[Door unlock time]	11
[Monitoring & CCTV]	04	[Modify Password]	11
[Intercom]	05	[Security setting]	12
a). Internal Line ID Setting	05	[System Time]	12
b). Function Demonstration	06	[Factory Default]	12
[Media(Recording/Photo Viewing)]	06	[Weather forecast]	12
a) Batch Delete Files	07	[CCTV manage]	12
[Scenario Mode]	07	[Version]	12
[Introduction to Settings Functions]	07	[UUID]	12
i.[Recording]	08	III. Mobile Cloud Settings and Operation Guide	12
[Front Door Unit / Power On/Of]	08	A. Download and register the Tuya app	12
[Auto recording]	08	B.Creating a home group operation	13
[Motion detection]	08	C. Bind the Indoor Monitor to the Tuya App	14
ii.[Wi-Fi]	09	①.Method 1[Search for "Add Device"]	14
A) .Connect to Wi-Fi	09	②.Method 2[Scan the "Add Device"]	15
B) .Delete Network	10	D. Share the family group with other mobile devices	16
iii.[Volume]	10	(Method 1)	16
[Dooe1/2 ring]	10	(Method 2)	17
[Touch tone]	10	E. Remove Bound Devices	17
[Intercom Ring tone]	10	IV.Common Issues with Tuya App	18
[Lock opening prompt tone]	10	V.Product Parameters	19
iv.[Storage]	10	II.Outdoor Station	
[Format SD card]	10	Outdoor Station I	
[Files Deletion]	10	I.Product Structure	20
[SDCard capacity]	10	II.Wiring Diagram	20
[Flash Capcity]	10	A. Wiring Diagram for Electric Lock Control	20
[Back Up Local Photos To SD Card]	10	B. Access Control Power Supply Wiring Diagram	21
v.[Display]	11	III. Product Parameters	21

Table of Contents

	Page
IV.Installation Instructions	22
Outdoor Station II	
I.Product Structure.....	23
II. Product Parameters	23
III.Operating Instructions	24
II.Wiring Diagram	25
A. Wiring Diagram for Electric Lock Control.....	25
B. Access Control Power Supply Wiring Diagram	26
III. Product Parameters	26

Important Safety Information

a.Test before installation

Open the package, check whether the accessories are complete, use the original test cable for the outdoor station and indoor monitor, whether the two devices work normally, and then install.

Note: The wiring must be strictly in accordance with the connection diagram of the manual, otherwise the function not be used normally, or even damage the equipment; please refer to the purchased access control power supply manual for the use of the access control power supply, which is not included in the set.

b.Maintenance

- 1.Don't use it with any product not produced by our company;
- 2.Users shall follow the user manual strictly to install and test the product.Please call our company for technical support if you have any question.

I. Indoor Monitor

I. System Wiring Diagram

A. Cable Selection Criteria

For information on the use and selection of cables, please refer to the following (cable quality affects video and voice transmission distance).

a) .RVV 4-core cable



Distance $\leq 30\text{m}$ ($4 \times 0.5\text{mm}^2$); Distance $\leq 60\text{m}$ ($4 \times 1.0\text{mm}^2$).

b) Category 5e/Category 6 solid copper 8-core Ethernet cable (two cores of the Ethernet cable should be used as one core, as a single core cannot function properly)



Category 5e/Category 6 solid copper 8-core Ethernet cable, distance $\leq 60\text{m}$

B. System Wiring Topology



The first indoor monitor connected directly must be set as **Extension 01** and used as the **primary unit**. Other indoor monitors should be set as **Extensions 02, 03, 04**, in the order of connection and used as **sub-units**.

The topology diagram is shown in Figure 1. For detailed settings, refer to page 11 [Extension ID Setting].

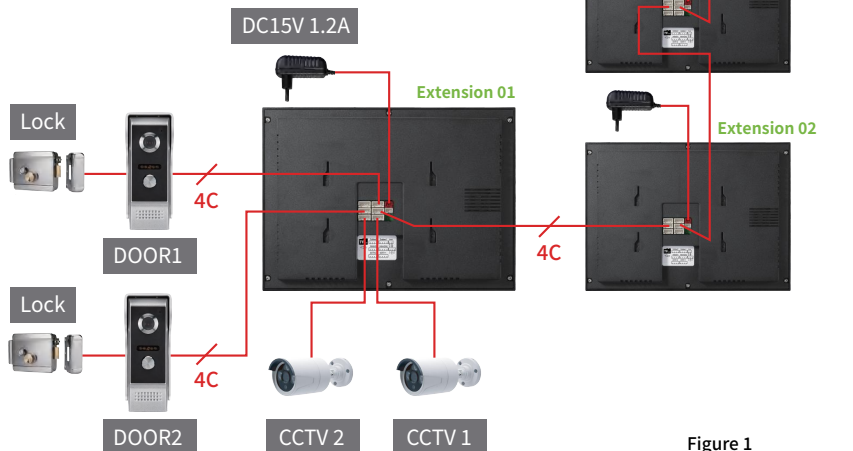
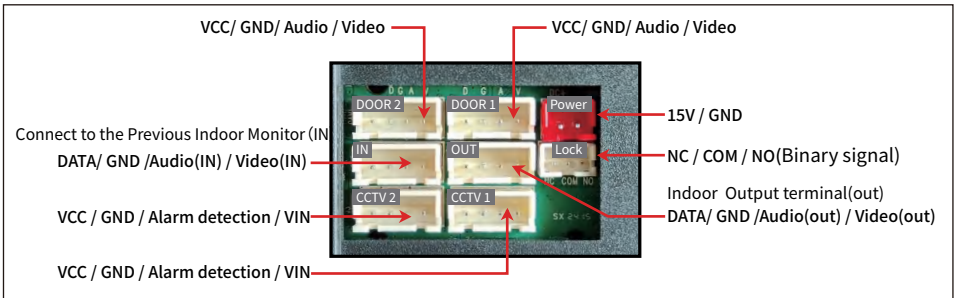
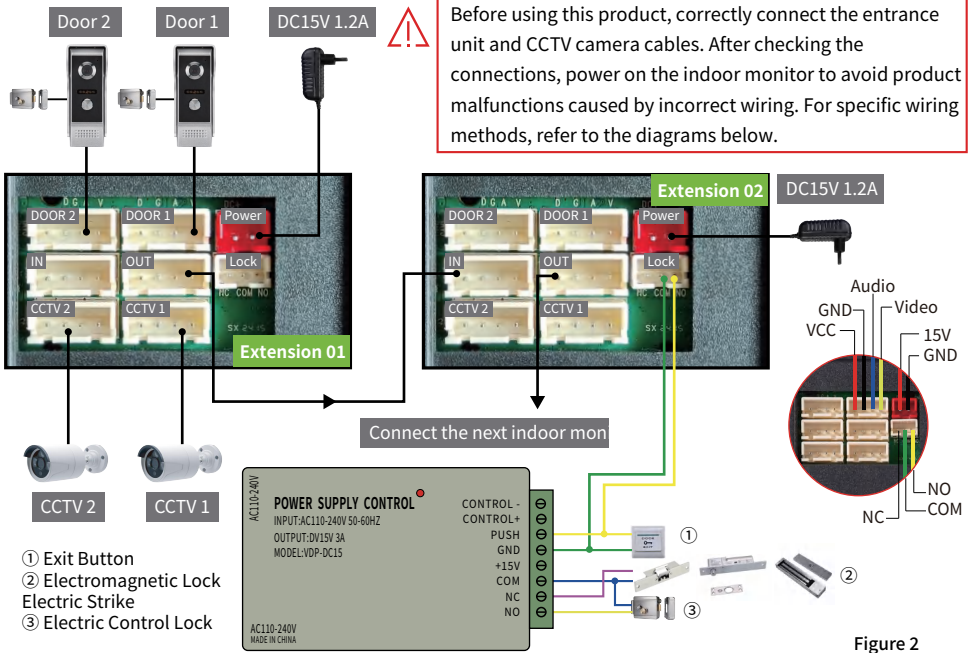


Figure 1

C.Definitions of Indoor Monitor Rear Interfaces and Wiring Diagram



D.CCTV Wiring Diagram

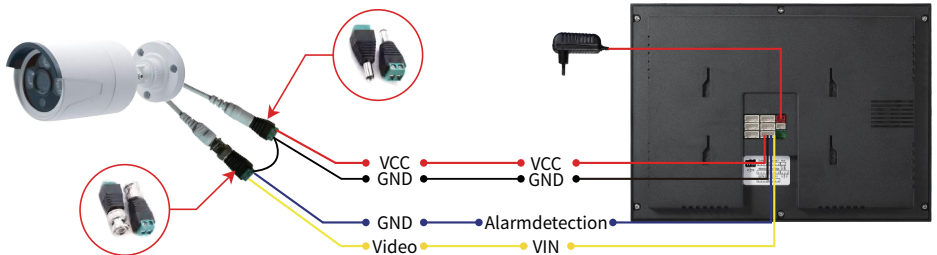
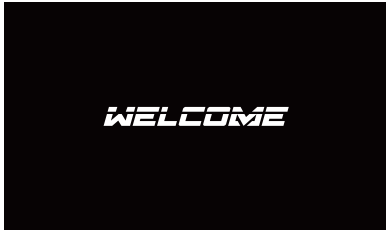


Figure 3

II.Interface

A. Power-On Self-Test

Plug the indoor monitor into the standard power supply and power it on. The system will start automatically and enter the main interface after 20 seconds.



Indoor Monitor Booting and Loading Interface



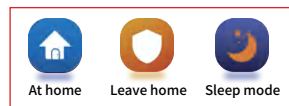
Indoor Monitor Startup Complete, Jump to Main Interface (Initial Main Interface)

B. Introduction to Main Interface Functions



Figure 4

- 1 Monitor**
Function: View real-time images from Entrance Unit 1 or Entrance Unit 2.
- 2 CCTV**
Function: View real-time images from CCTV1 or CCTV2. The "—" indicates that the CCTV camera is not connected.
- 3 Intercom**
Function: When multiple indoor monitors are connected in series, this feature allows calling other online indoor monitor (indoor monitor numbers must be set).
- 4 Media(Recording/Photo Viewing)**
Function: Review recorded videos/photos, motion detection, and alarm messages. The "N" indicates unread messages.
- 5 Scenario mode**
Function: For details, see (Page 7, [Scenario Mode])

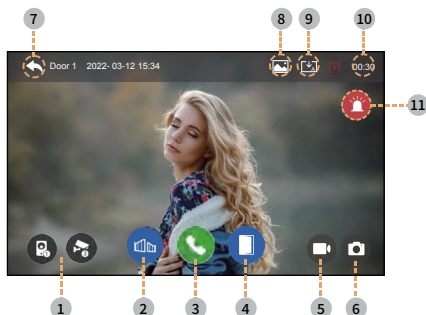


- 6 System Settings**
Function: For details, see (Page 8, [Introduction to Settings Functions])
- 7 Time and Date**
Function: For details, see (Page 12, [System Time])
- 8 Wi-Fi Status**
Function: Displays Wi-Fi status.
A dark interface showing two Wi-Fi status options: "Not connected to Wi-Fi" and "Connected to Wi-Fi". Below these is a "Connected to Tuya App" status.
- 9 TF Card Status**
Function: Displays TF Card status.
A dark interface showing two TF Card status options: "No TF Card Inserted" and "TF Card Inserted".
- 10 Standby Mode**
Function: Turn off the screen / Lock the screen
- 11 Weather Forecast**
Function: After correctly connecting to the Tuya APP on the mobile device and enabling the weather forecast function in System Settings, the local real-time weather information will be displayed. For details, see (Page 12, [Weather Forecast]).

[Monitoring & CCTV]

On the main interface, click the Monitoring/CCTV button to enter the surveillance interface. The indoor monitor screen will display the real-time footage from the outdoor station/CCTV camera. You can switch to view other connected devices. Tap any area of the screen to bring up the adjustment settings interface.

Function Path: Main Interface → Monitoring/CCTV



(Figure 5). Outdoor Station Surveillance Interface



(Figure 6). CCTV Surveillance Interface

1 Switching Between Outdoor Station 1/2 and CCTV 1/2 Interfaces



Outdoor Station1/2 CCTV1/2

2 Garden Lock

Function: Opens the lock connected to the current monitored outdoor station (duration can be set, ranging from 1 to 60 seconds, with a default value of 1 second. For settings, see Page 11, [Gate unlock time]).



3 Answer Call



Answer Call End Call

4 Room Lock

Function: Opens the lock connected to the indoor monitor (duration can be set, ranging from 1 to 60 seconds, with a default value of 5 seconds. For settings, see Page 11, [Door unlock time]).



5 Manual Video Recording

Function: Records the surveillance footage from the entrance unit. Video duration is 26 seconds (requires a TF card). Click the record button to start recording (button turns red), and click again to stop.



6 Take Photo

Function: Captures the current surveillance image. Click the photo button to take a photo (button turns red).



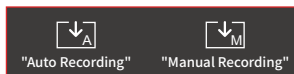
7 Return to Main Interface

8 Motion Detection Storage Options: Photos or Videos



9 Recording Status

Function: Displays the recording mode as “Auto Recording” or “Manual Recording”. When Auto Recording is enabled, the system records a video segment each time a visitor presses the call button. During recording, you can take photos manually or stop recording by pressing the record button. For settings, see Page 8, [Auto Recording].

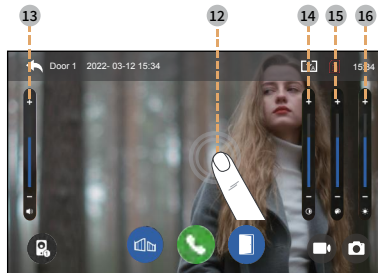


10 Countdown

Function: The surveillance duration is set to 30 seconds, and the system automatically returns to the main interface when the time expires.

11 Trigger Alarm

Function: Press the button to trigger an alarm sound to alert others in case of an emergency outside the door.



(Figure 7). Adjustment Parameter Interface

12 Pop-up Adjustment Parameter Interface

Function Path: Monitoring/CCTV Interface → Click any monitored area on the screen to pop up the adjustment window → Adjust values. All adjustments are only effective for the currently displayed outdoor station or camera. If two devices are connected, they need to be set separately.

13 Adjust Intercom Volume

Function: Adjusts the intercom volume for the current outdoor station, ranging from 1 to 20.

14 Adjust Screen Contrast

Function: Adjusts the contrast of the current outdoor station's surveillance image, ranging from 1 to 20.

15 Adjust Screen Saturation

Function: Adjusts the saturation of the current outdoor station's surveillance image, ranging from 1 to 20.

16 Adjust Screen Brightness

Function: Adjusts the screen brightness of the current outdoor station's surveillance image, ranging from 1 to 20.

[Intercom]

a). Internal Line ID Setting

When connecting multiple indoor monitors, set the internal line ID to enable intercom communication between them (Host ID = Internal Line 1, Extension IDs = Internal Lines 2~4).

Dialing duration is 30 seconds, and call duration is 60 seconds.

Setting Path: ① Settings → ② Others → ③ Internal Line ID Setting → ④ Set Internal Line ID

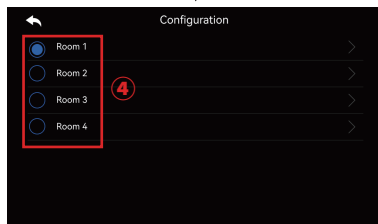
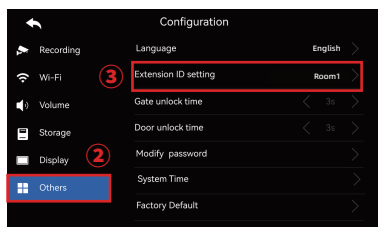
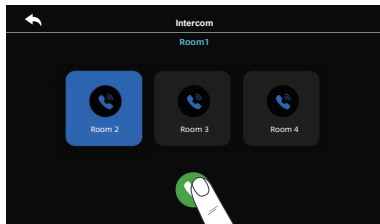
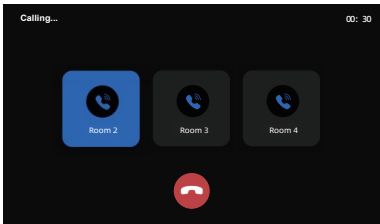


Figure 8

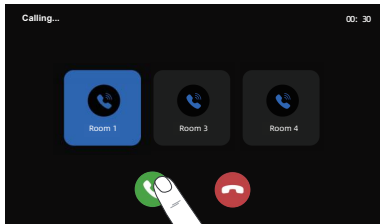
b). Function Demonstration



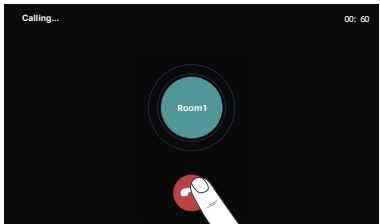
①. Select the indoor monitor to call → Click the green button to make a call.



②. During the call, wait for the other party to answer. The dialing duration is 30 seconds. The call will be automatically disconnected when the time expires. You can also hang up manually.



③. Upon receiving an internal call, you can choose to answer or hang up.



④. After answering the call, the caller's ID will be displayed at the center of the screen. The call duration is 60 seconds. The call will be automatically disconnected when the time expires. You can also hang up manually.

[Media(Recording/Photo Viewing)]

Function Path: Main Interface → Media

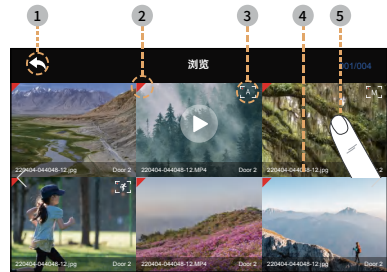
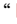
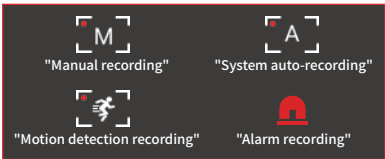


Figure 9

- ① Return to Main Interface
- ② Unread Messages
Function: Files marked with a “” in red are unread messages.
- ③ File Status
Function: Displays icons of four types.



- ①.Manual recording:
Files generated by manually taking photos or recording videos during surveillance or visitor calls.
- ②.System auto-recording:
Files generated by the system automatically taking photos or recording videos when a visitor calls, as selected in the settings for auto-recording.
- ③.Motion Detection Recording:
Files generated by taking photos or recording videos when motion detection is enabled and triggered.
- ④.Alarm recording:
Files generated when the indoor monitor activates an alarm sound and records a video upon detecting removal of the CCTV, with CCTV alarm recording enabled.

- ④ File Type
Function: Displays key information such as capture time, file format, and file source.

5 View File

Function: Click to view photos or videos, supports page-turning, and allows deletion of the file.

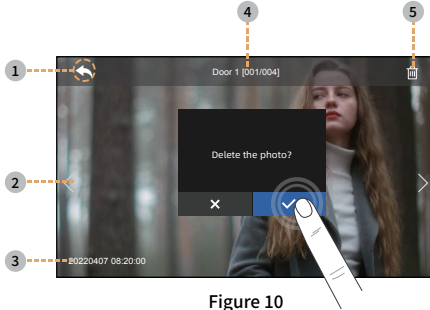


Figure 10

1 Return to Parent Directory

2 Page Turning

3 File Information

4 Source of File

Function: Records the device that created the file.

5 Delete Single File

Function: Click the delete icon to pop up a confirmation box asking whether to delete.

a) Batch Delete Files

To batch delete photo or video files, follow the steps below.

Set Path: ①Settings → ②Storage → ③Delete Options → ④Select Videos or Photos

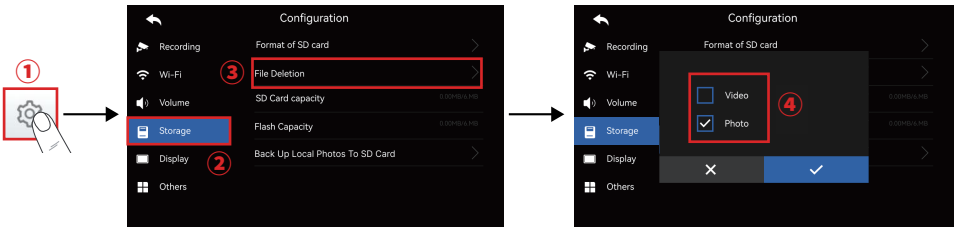


Figure 11

[Scenario Mode]

The function has three modes: At home , Leave home, and Sleep mode



Figure 12

- At home: when a visitor calls the outdoor station, both the indoor monitor and the outdoor station will ring simultaneously;
- Leave home: When a visitor calls the outdoor station, the outdoor station will play a voice prompt saying "Please leave a message after the tone," while the indoor monitor will be on mute and will not ring;
- Sleep mode: When a visitor calls the outdoor station, the outdoor station will ring, while the indoor monitor will be muted and will not ring;

[Introduction to Settings Functions]

The settings list includes six functions: **i. Recording**, **ii. WI-FI**, **iii. Volume**, **iv. Storage**, **v. Display** and **vi. Others**. For detailed functions, see below.

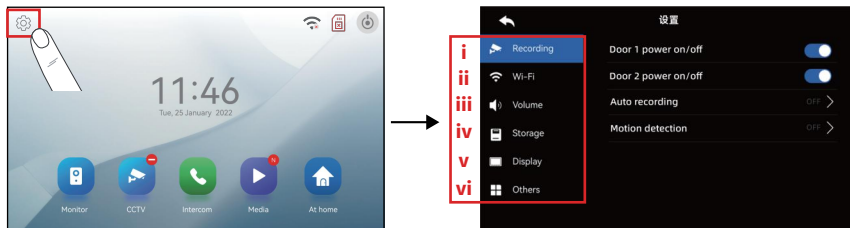


Figure 13

i. [Recording]

[Front Door Unit / Power On/Of]

- a) When the purchased outdoor station has card-swiping or password unlocking functions, it requires power to operate. Therefore, enable the "Outdoor Station 1/2 Power On/Off" option to allow the indoor monitor to supply power to the outdoor station.

[Auto recording]

- a) You can choose between Photo Mode and Video Mode. Once enabled, the system will automatically record when a visitor calls the outdoor station.
- b) The indoor monitor has a built-in storage capacity of 6MB, which only supports Photo Mode and can be used without a TF card. If Video Mode is required, a TF card must be used.

[Motion detection]

- a) Motion detection can only be executed on one connected device. Select the Outdoor Station 1/2 or CCTV 1/2 for motion detection.
- b) Motion detection storage options include photos and videos. The indoor monitor has a built-in storage capacity of 6MB, which only supports photo storage and can be used in photo mode without a TF card. If video recording is required, a TF card must be inserted.

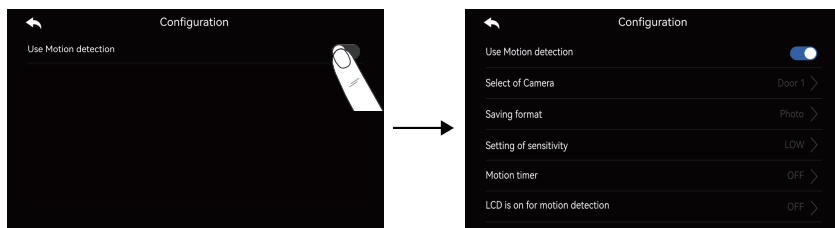


Figure 14

[Use Motion detection] : Indicates enabling or disabling motion detection;

[Select of Camera] : Select the device to trigger motion detection (Outdoor Station 1/2, CCTV 1/2); only one connected device can be executed;

[Saving format] : Two modes: photo and video. When motion detection is triggered, the system captures photos or records video;

[Setting of sensitivity] : Indicates the sensitivity level for motion detection, with three settings: High, Medium, and Low;

[Motion timer] : Set the time period for enabling motion detection, which can only be triggered during the specified time;

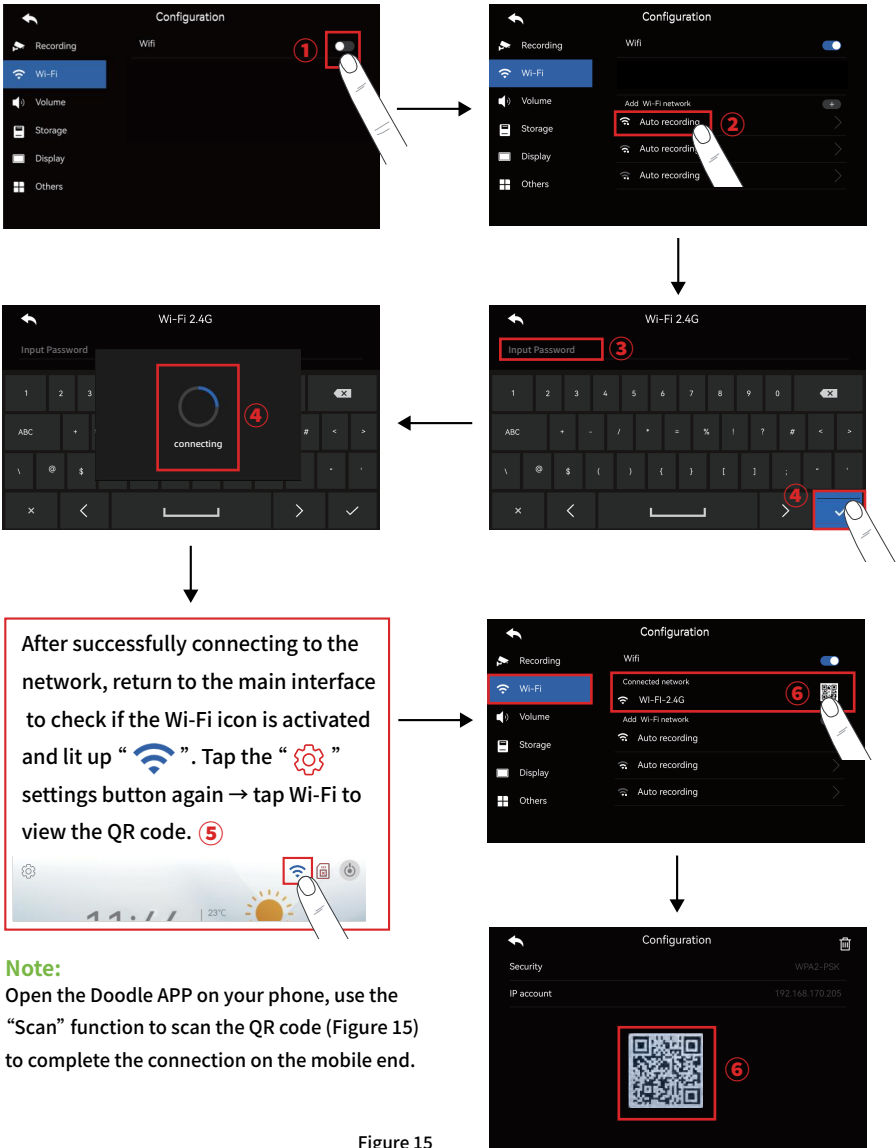
[LCD is on for motion detection] : If this function is not enabled, when motion detection is triggered, the system will record video or capture snapshots in the background without lighting up the indoor monitor screen. If this function is enabled, when motion detection is triggered, the indoor monitor screen will light up to display the real-time outdoor view, while the system records video or captures snapshots.

ii. [Wi-Fi]

A). Connect to Wi-Fi

The indoor monitor needs to connect to a Wi-Fi network (hereinafter referred to as Wi-Fi). Follow the steps below to complete the connection.

① Tap to open the wireless network→②Find the Wi-Fi network you want to connect to and select it→③Enter the correct Wi-Fi password and tap to connect→④ Wait for the connection to be established→⑤Return to the main interface to check if the network is activated and lit up → ⑥Tap again to view the Wi-Fi QR code



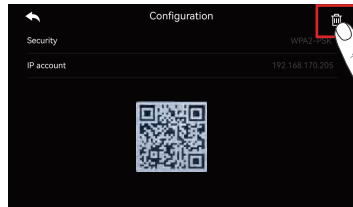
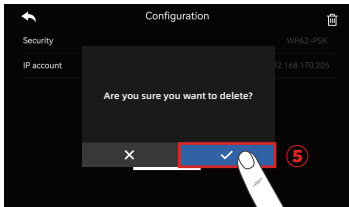
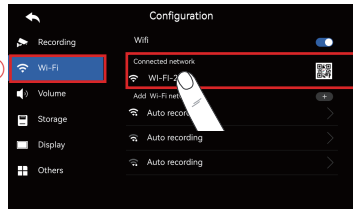
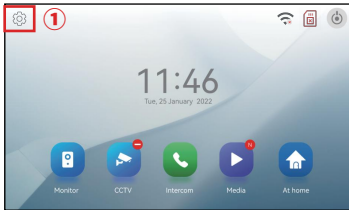
Note:

Open the Doodle APP on your phone, use the “Scan” function to scan the QR code (Figure 15) to complete the connection on the mobile end.

Figure 15

B).Delete Network

① Click Settings → ② Wi-Fi → ③ Select the connected network → ④ Click the delete icon → ⑤ Confirm to delete the network.



iii. [Volume]

[Dooe1/2 ring] : You can set three different time periods to control the volume of the ringtone, the call ringtone, and the duration of the ring time, respectively;

- a). Schedule: Time periods are adjustable;
- b). Ring time: Indicates controlling the duration of the ring time, with a range of 1 to 20 seconds;
- c). Ring mode: It is divided into standard ringtones and custom ringtones;
 - ①. Standard ringtone refers to the default ringtones in the indoor monitor;
 - ②. Custom ringtones indicate that users can use MP3 music format as the call ringtone. (You can use a card reader to read the TF card, find the folder named **[music]**, put the downloaded MP3 music files into this folder, exit the card reader, take out the TF card and insert it into the indoor monitor, and the indoor monitor will display the music ringtones that have been read);
- d). Ring select: Select any one as the call ringtone;
- e). Ring volume: Set the ringtone volume with a range of 0-4; when the ringtone volume is set to 0, the indoor monitor will not ring;

[Touch tone] : It indicates the option to enable or disable the touch screen sound that plays when the screen is touched;

[Intercom Ring tone] : It indicates the selection of ringtones and the volume level for internal line calls;

[Lock opening prompt tone] : It indicates the unlocking sound prompted by the outdoor machine when opening or closing the courtyard lock.

iv. [Storage]

[Format SD card] : Clicking "Confirm" will format the TF card. If a TF card is not inserted into the indoor monitor, clicking will have no effect;

[Files Deletion] : You can individually delete photos or videos from the files being browsed;

[SDCard capacity] : Display the available and total space of the current TF card;

[Flash Capacity] : The system comes with 6MB of storage space, which is limited to storing photos only;

[Back Up Local Photos To SD Card] : Copy the photos stored in the built-in system storage to the TF card.

v. [Display]

[Screen Adjustment] : It indicates that the background adjusts the brightness, contrast, and saturation of the indoor monitor's monitor screen, with a range of 0 to 20, and the default is 10 (this function only adjusts the image captured by the outdoor station 1);

[Standby setting]

- a). LCD off(After 30sec): It indicates that if there is no screen operation within 30 seconds, the system will automatically lock the screen and enter standby mode;
- b). Screen Saver: It indicates that photo playback will occur after a period of no screen operation;
 - ①.Screen Saver time: You can choose to play in a loop or set a time period to activate the screen lock;
 - ②.Night mode: After enabling this mode, you can set a time period during which the screen will be locked, and the screen brightness will be reduced;
 - ③.List of display: You can choose the content to play after the screen is locked. When media is selected, the system will display the latest frame of a photo or a recorded video from the browsed files;
 - ④.Image of background
 - i).No Back ground: After locking the screen, it will be black with no background;
 - ii).Basic image: After locking the screen, the system's built-in landscape photos will be played;
 - iii).SD Card Image(Digital Photo Frame feature): After locking the screen, the system will play the designated photos stored on the TF card (you can use a card reader to access the TF card, find the folder named **[picture]**, place .jpg format images with a size of 1024*600 into this folder, exit the card reader, and insert the TF card into the indoor monitor to activate the SD wallpaper standby feature);

[Brightness] : It indicates adjusting the overall brightness of the indoor monitor's screen, with a range of 0 to 100;

Note:

If the motion detection function is enabled, the indoor monitor will not activate the screen lock function after the screen turns off.

vi. [Others]

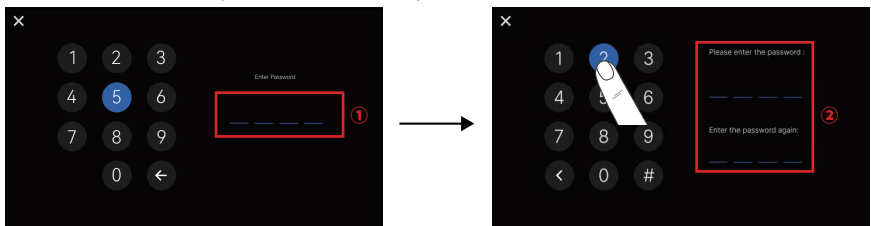
[Language] : Supports Chinese, English, French, Russian, German, Arabic, Portuguese, Spanish, Polish, and Italian.

[Extension ID setting] : Indicates the local device ID number, ranging from 1 to 4. Line 1 represents the primary unit, while lines 2 to 4 represent the extension units. Up to 4 indoor monitors are supported per household, and only the indoor monitor with ID 1 can perform network configuration.

[Gate unlock time] : Indicates the unlock time for the outdoor station's connected lock, ranging from 1 to 60 seconds, with a default of 1 second.;

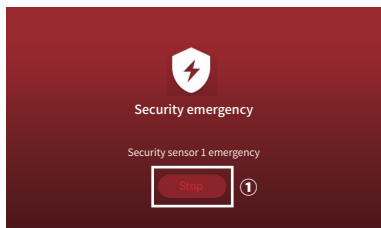
[Door unlock time] : Indicates the unlock time for the lock connected to the indoor monitor, ranging from 1 to 60 seconds, with a default of 5 seconds.;

[Modify Password] : Used for CCTV security monitoring. When a security alarm is triggered, a password must be entered to deactivate the alarm. The initial password (old password) is 1234 (the password can be changed, and it will revert to the initial password after a factory reset).

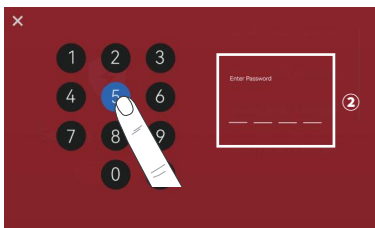


① Enter the initial password (old password) 1234

② Change the 4-digit security password.

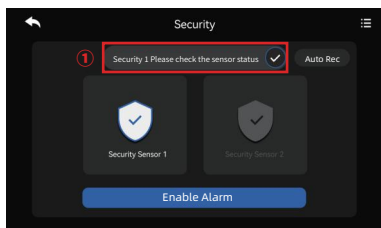


③. When the alarm function is activated, if the CCTV is removed, the indoor monitor will trigger the alarm function.

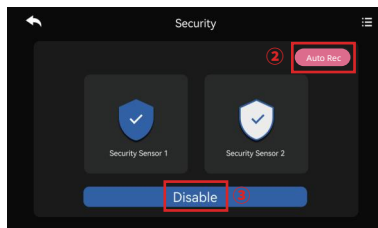


④. To disarm the alarm, you need to reconnect the CCTV and then enter the [security password]

[Security setting] : Indicates that the indoor monitor is connected to the CCTV and the alarm function is enabled. When the CCTV is disconnected, the indoor monitor will trigger the alarm function. To deactivate the alarm, reconnect the CCTV and enter the **security password**. You can set the auto-recording function, but it must be enabled before the alarm function is activated. The recorded video files will be stored in the browsing files. For the wiring diagram, refer to (Figure 3 on page 2).



① When the message "Please check the status of the security sensor" appears, check if the CCTV wiring is correct.



② Enable the auto-recording function first.
③ Then activate the alarm function.

[System Time] : The time is in a 24-hour format date format (After completing the connection to the Tuya app, the system will automatically synchronize and update to the local time zone);

[Factory Default] : Click "Confirm," and the indoor monitor will clear all the set options and revert to the initial options;

[Weather forecast] : This feature needs to be connected to the Tuya app before it can be enabled;

[CCTV manage] :

a). You can connect to the CCTV of the corresponding brand by manually entering the information;

b). When the CCTV and the indoor monitor are connected to the same network, you can directly click on the "+" sign to search for and register to add;

[Version] : Display the current software version;

[UUID] : You can set the push delay for the Tuya app phone call, which means when the outdoor station calls, the indoor monitor will ring, and the push to the Tuya app will be after 0 to 25 seconds.

III. Mobile Cloud Settings and Operation Guide

A. Download and register the Tuya app

- For IOS system: Search "Tuya APP" in the "Apple store" application market and download; For Android system: Search "Tuya APP" in the "Software Store" application market and download;
- Or, scan the QR code as listed below by your phone, select the corresponding country, and download;
- After completing the account registration, log in.



Scan QR code and Downloading the APP for Apple/Android Systems

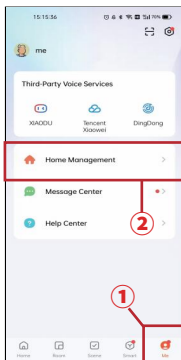


Users can choose to log in using their phone number, email, QQ account, or WeChat

B.Creating a home group operation

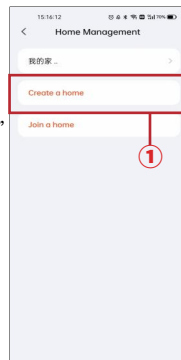
Note:

A new family group must be created for device management later.



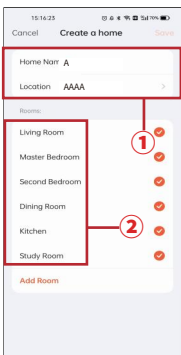
01

- Open the Tuya APP
- Click on "Me"
 - Select "Family Management"



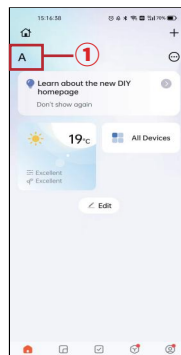
02

- Click on ① "Create Home"



03

- Create ① "Home Name" and select "City Location".
- Choose any room location, Click Save, then click Complete.

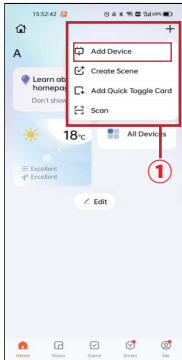


04

- ①The system jumps to the home page, showing the completed creation of the "Home Name". At this point, the family group creation is complete.

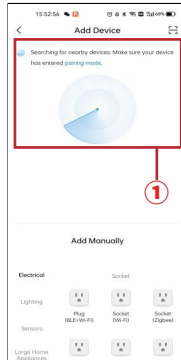
C. Bind the Indoor Monitor to the Tuya App

①.Method 1[Search for "Add Device"]



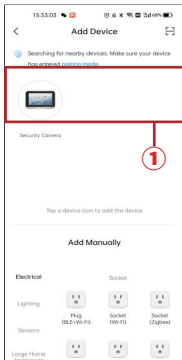
01

Click on ① the top right " + " and select "Add Device".



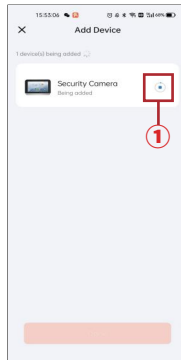
02

①The system automatically searches for nearby devices that can be added.



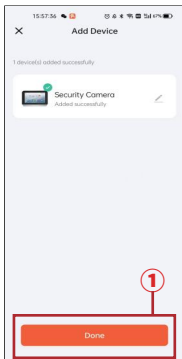
03

Discover devices, then click ① to add



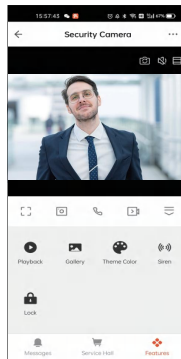
04

①The device is currently connecting; please wait for the connection to be established.



05

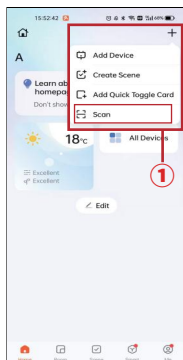
Connection completed, device added successfully, click ① "Complete".



06

Automatically redirected to the monitoring screen.

②.Method 2[Scan the "Add Device"]



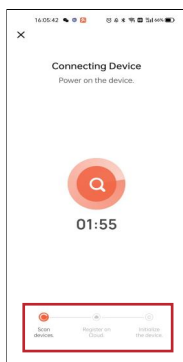
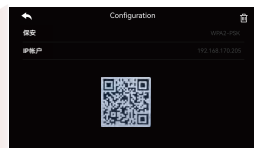
01

Click on ① the top right " + " and select "Scan".



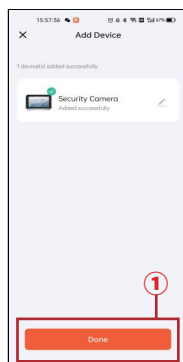
02

Scan the activated Tuya QR code on the indoor monitor with your mobile phone. (Open the QR code for details (see Figure 15 on page 09))



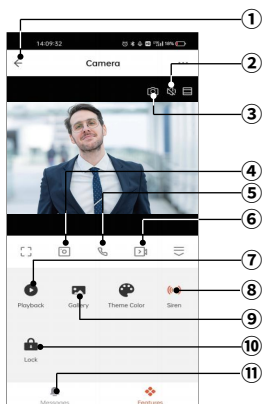
03

The phone enters the network configuration mode, waiting for network configuration.



04

Connection completed, device added successfully, click ① "Complete", and you will be automatically redirected to the monitoring screen.



① Return

② Speaker: Activates to hear sounds from outside the door.

③ Channel Switch: Switches to other connected devices.

④ Take Photo: Captures a snapshot.

⑤ Microphone: Click to communicate with the outdoor station (the speaker will also turn on once the microphone is activated).

⑥ Record: Press to start recording, press again to stop.

⑦ Playback: Ensure the indoor monitor is inserted with a TF card. When a visitor calls the outdoor station, the app will record, and the footage can be viewed in the playback function.

⑧ Siren: Click to activate the indoor monitor's alarm function.

⑨ Album: Snapshots and recordings are stored here; click to view.

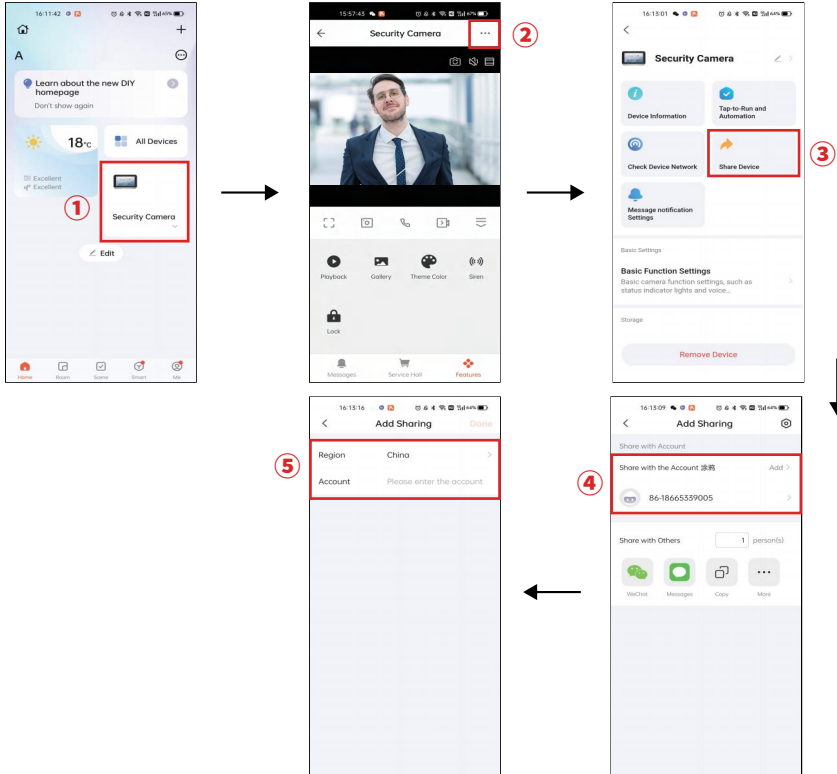
⑩ Unlock: Click the unlock icon to open the lock connected to the outdoor station/ indoor monitor.

⑪ Messages: Stores messages related to visitor calls, motion detection triggers, and unlock events.

D. Share the family group with other mobile devices.

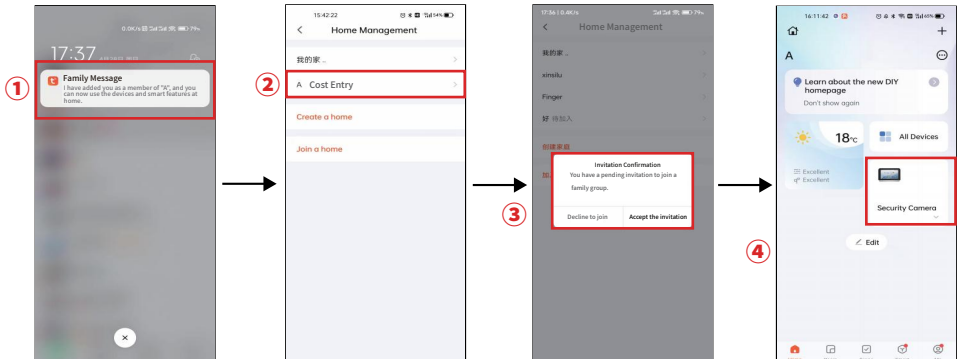
[Method 1]

Enter the App → ①Select the device you want to share, and click on monitoring mode → ②Click on the top right corner for settings → ③Share device → ④Add sharing → ⑤Enter the region/account.



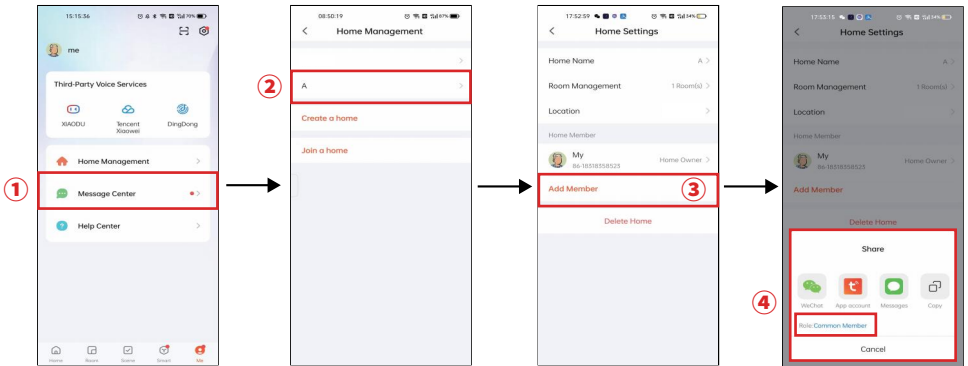
Operation on Phone "A"

①.User "A" receives a message reminder from Tuya → ②. Click to join the family → ③. Accept the invitation → ④. Successfully join the family group.



[Method 2]

Enter the App → ① Home Management → ② Click on the home group you created → ③ Add member → ④ Select invitation method to send invitation code to phone user "A".

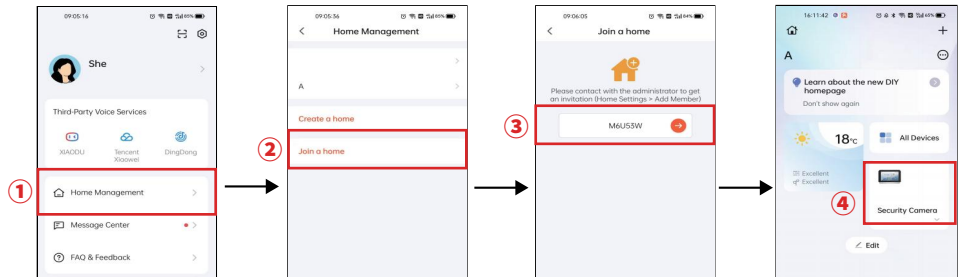


Note:

You can assign the new family member one of the following roles: regular member or family administrator.

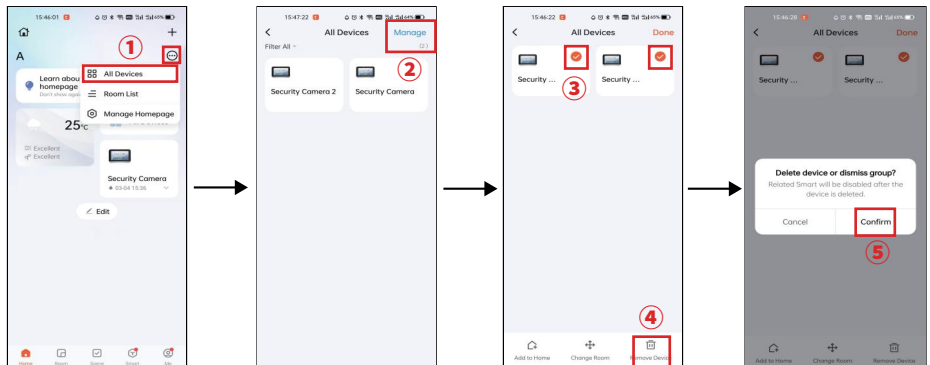
Operation on Phone "A"

① Click on home management → ② Click on join a home → ③ Enter the invitation code → ④ Successfully join in

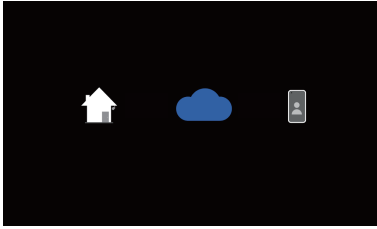


E. Remove Bound Devices

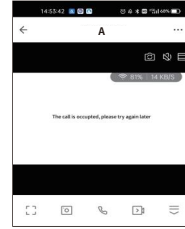
① Tap to view all devices → ② Tap Manage → ③ Select the device to remove → ④ Tap Remove Device → ⑤ Confirm removal → Device removal successful, indoor monitor will restart automatically.



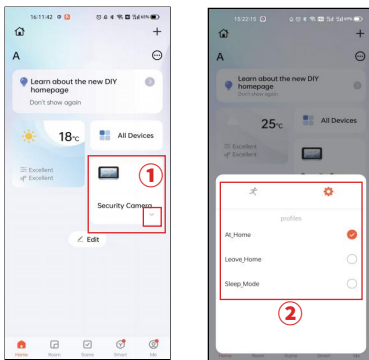
IV.Common Issues with Tuya App



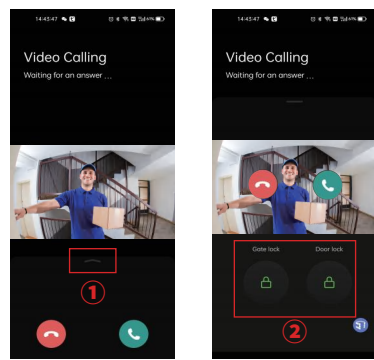
① When the mobile app is on the monitoring screen, the indoor monitor will be temporarily locked and unable to perform any operations.



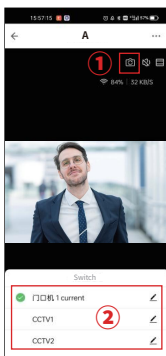
② If the mobile app stays on the monitoring screen for over 2 minutes, the system will automatically exit the monitoring mode.



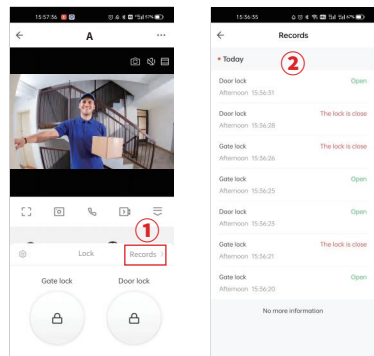
③ The mobile app can remotely activate or deactivate motion detection on the outdoor station and control the indoor monitor's scenario modes.



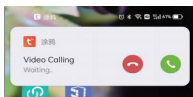
④ When a visitor calls the outdoor station, swipe up the arrow to expand the unlock button. You can unlock the door directly without answering the call.



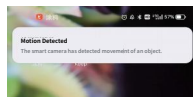
⑤ You can switch to view any bound devices at any time and rename them for easier identification.



⑥ The mobile app can unlock the door connected to the outdoor station and indoor monitor, and view the unlock records.



⑦ When a visitor calls the outdoor station, the mobile phone will receive a push notification.



⑧ When the outdoor station triggers motion detection, the mobile phone will receive a push notification.

V .Product Parameters

Project	Specification
Display screen	IPS touch screen
Resolution	1080P(1024*600)
Power supply	DC15V 1.2A
Power	Standby :≤3W Working :≤10W
Connected indoor monitor	RVV4
System support	4 indoor monitors + 2 outdoor stations + 2 cctv
Intercom Communication	Support
Playback Review	Support
Motion detection	Support
Dual Lock Control	Support
CCTV Anti-tamper Alarm	Support
Ringing tones	6 / Customized ringtones
Language	Chinese, English, French, Russian, German, Arabic, Portuguese, Spanish, Polish, Italian
Monitoring duration	30s
Intercom duration	60s
Video Recording Duration	26s (At home,Sleep mode) / 17s (Leave home)
APP	Tuya APP
Bind the app	Four (mobile phone terminals)
Extended storage	Built-in 6Mb Storage Space + Expandable with a 128GB TF Card

II. Outdoor Station

Outdoor Station I

I. Product Structure

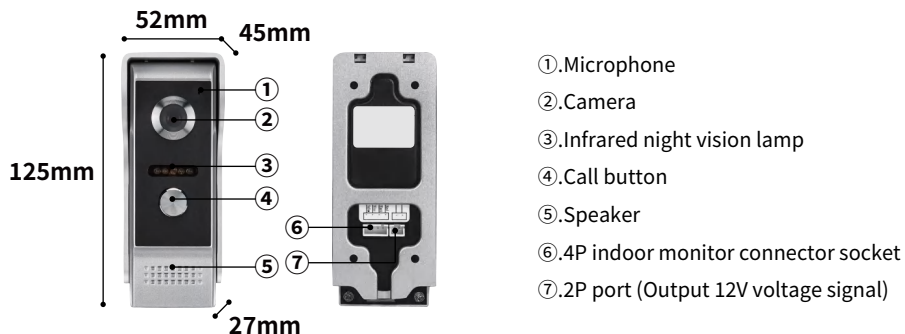


Figure 1

II. Wiring Diagram

A. Wiring Diagram for Electric Lock Control

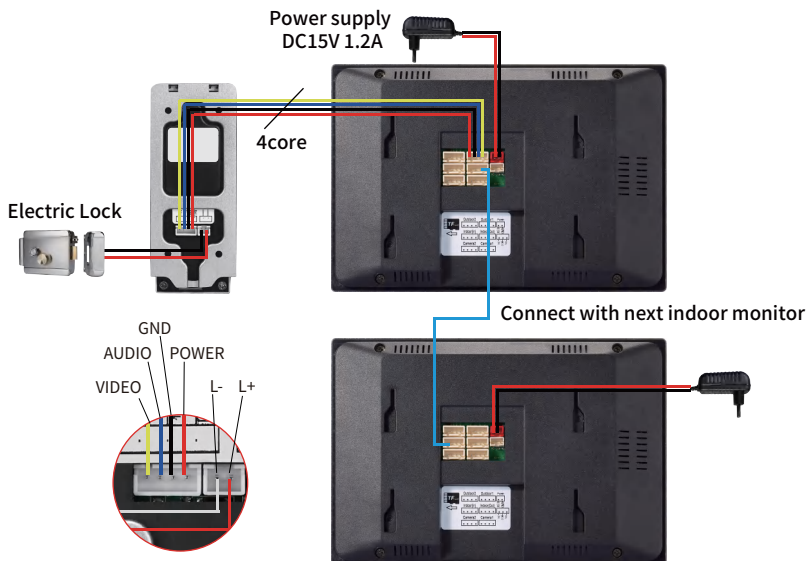


Figure 2

B. Access Control Power Supply Wiring Diagram

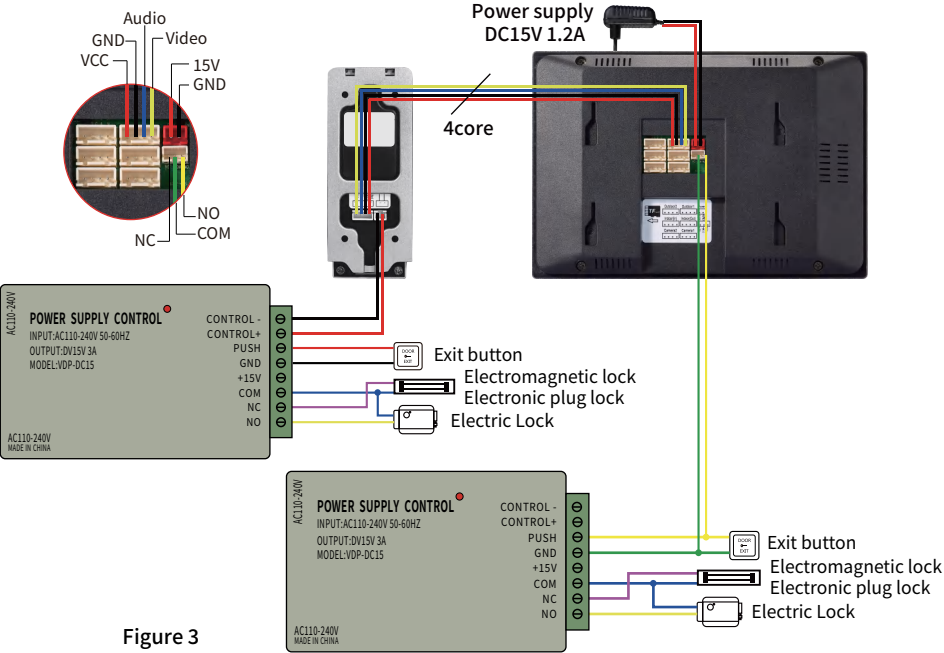


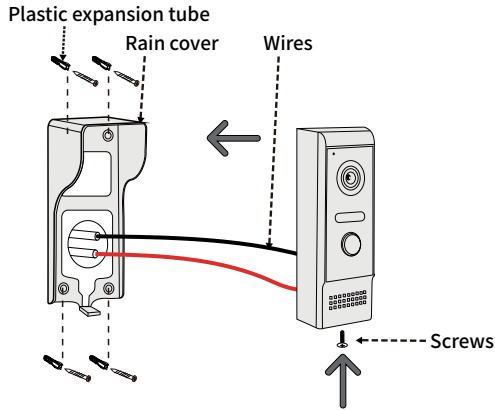
Figure 3

III. Product Parameters

Project	Parameter
Camera	2.0MP
Night vision	Night vision illumination
Power supply	Indoor Monitor power supply
Power	Standby:≤2W Operating:≤5W
Waterproof/Rainproof	Support
View Angle	120°
Night vision distance	0.2~3M
Operating temperature	-30℃~60℃
Installation	Surface mount
Material	Aluminum alloy

IV. Installation Instructions

How to install the outdoor station:



A. Installation & location of outdoor station

At first, determine the location and height for installing the outdoor station; the reference height is 150-160 cm from the camera center to ground.

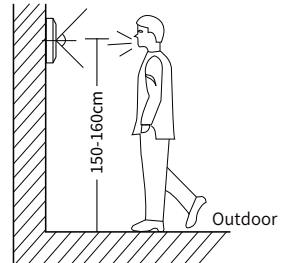
B. Fix the outdoor station rain cover

As shown in the figure: Take out the rain cover ;open the package of screws to take out the plastic expansion tube and screws ;

- Drill a hole, bore diameter: about 6mm ;
- Fix the plastic expansion tube at the above hole ;
- Fix the rain cover with screws.

C. Secure the Outdoor Station

- Remove the outdoor station and cables, and thread the cables through the outdoor station's rain cover;
- Neatly arrange the cables and correctly connect them to the outdoor station;
- Hang the outdoor station horizontally on the already fixed rain cover;
- Secure the outdoor station below with screws.



Note:

- During installation, please stay away from strong radiation devices such as TVs, computers, and VCRs;
- Do not disassemble without permission to avoid electric shock;
- Do not drop, shake, or impact the device, as it may damage the components;
- Choose the best installation position with a distance of 150cm from the horizontal line of sight;
- Turn off the power before installation;
- Maintain a distance of more than 60cm from AC power to avoid interference, and keep away from water, magnetic fields, and chemicals.

Outdoor Station II

I.Product Structure

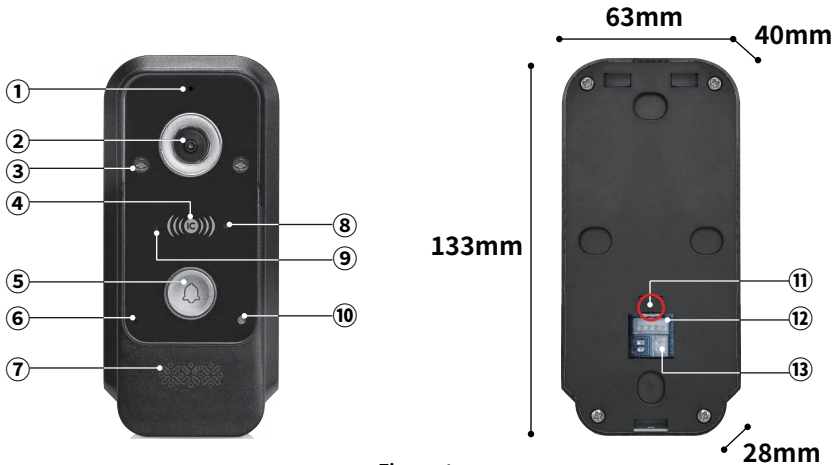


Figure 1

- ①.Microphone
- ②.HD camera
- ③.Infrared night vision light
- ④.IC card swiping area
- ⑤.Call button
- ⑥.Red indicator representing unlocking status
- ⑦.Speaker
- ⑧.Red indicator(deleting user card/unregistered card Status)
- ⑨.Green indicator(Swiping/adding user card status)
- ⑩.Night vision sensor
- ⑪.Reset the management card toggle switch
- ⑫.4P indoor monitor connector socket
- ⑬.2P port (Output 12V voltage signal)

II. Product Parameters

Project	Parameter
Camera	2.0MP
Night vision	Night vision illumination
Power supply	Indoor Monitor Power Supply
Power	Standby:≤2W Operating:≤5W
Waterproof/Rainproof	Support
View Angle	120°
Night vision distance	0.2~3M

Unlocking type	Indoor Monitor unlocking / IC card swiping / NFC
Number of IC cards	1000 piece(13.56MHz)
Operating temperature	-30°C~60°C
Installation	Surface mount
Material	Aluminum alloy

III.Operating Instructions

Note:

- A).** Please read through the operation steps carefully before taking following steps. The system will automatically exit operation interface after “Beep, Beep” sound if no continuous operation is performed within 10 seconds. In case that you failed operation due to above reason, please do it again.
- B).** The management card has been added before delivery. If the management card is lost, it can be re-made and added according to the operation.
- C).** When the purchased outdoor station is equipped with card-swiping or password unlocking functions, these features require power to operate. Therefore, it is necessary to turn on the "outdoor Station 1/2 Power" switch to enable the indoor monitor to supply power to the outdoor station.

The path to enable the function: On the main interface of the indoor monitor, click on “Settings” → select “Records” → depending on the port to which the outdoor station (door unit) is connected to the indoor monitor, choose to power on either “outdoor Station 1” or “outdoor Station 2.”

Function	Operation Steps
Register management card	Switch the outdoor station's management card reset switch to the right (Figure 1, ⑩) → Connect the outdoor station to the indoor monitor using a 4-core RVV cable, and power on the indoor monitor to start it → The outdoor station's buzzer will sound “beep” once, and the green indicator light will flash simultaneously (Figure 1, ⑨). Swipe the first card to add (green card) (the buzzer sounds “beep” once) → Swipe the second card to delete (red card) (the buzzer sounds “beep” once) → Disconnect the 4-core RVV cable from the outdoor station and switch the management card reset switch back to the left to reset (the management card is now created).
Add user cards	Swipe the increase card (green card) (the buzzer beeps once, the IC card swiping area green status indicator light remains on) → Then swipe the blank card (yellow card) (the buzzer beeps once, if you want to add multiple user cards at the same time, you can swipe blank cards continuously) → Swipe the increase card (green card) again to confirm (the buzzer beeps twice, the green light goes out, indicating the addition is complete).
Deleting individual user cards	Swipe the deletion card (red card) (the buzzer beeps once, the IC card swiping area red status indicator light stays on) → Then swipe the card to be deleted (the buzzer beeps once) → Swipe the deletion card (red card) again to confirm (the buzzer beeps twice, the red light goes out, indicating deletion is complete).

Function	Operation Steps
Swipe the delete all cards	Swipe the deletion card (red card) (the buzzer beeps once, the IC card swiping area red status indicator light stays on) → Then swipe the increase card (green card), the buzzer beeps once → Swipe the deletion card (red card) again to confirm (the buzzer beeps once while the red light flashes rapidly) → The buzzer beeps continuously in a "di-di" tone for 7 beeps (all user cards are cleared and deleted).
Reset the management card	Move the outdoor station management card reset switch to the right (Figure 1, ⑩) → Connect the outdoor station to the indoor monitor using a 4-core RVV cable, and power on the indoor monitor to start it → The outdoor station's buzzer will sound "beep" once → Swipe the first card, which is defaulted as an add card (green card), and the buzzer will sound "beep" once → Swipe the second card, which is defaulted as a delete card (red card) → Move the outdoor station's management card switch to the left to reset (the management card reset is now complete).
Swipe the card is invalid	The buzzer beeps 3 times

IV.Wiring Diagram

A. Wiring Diagram for Electric Lock Control

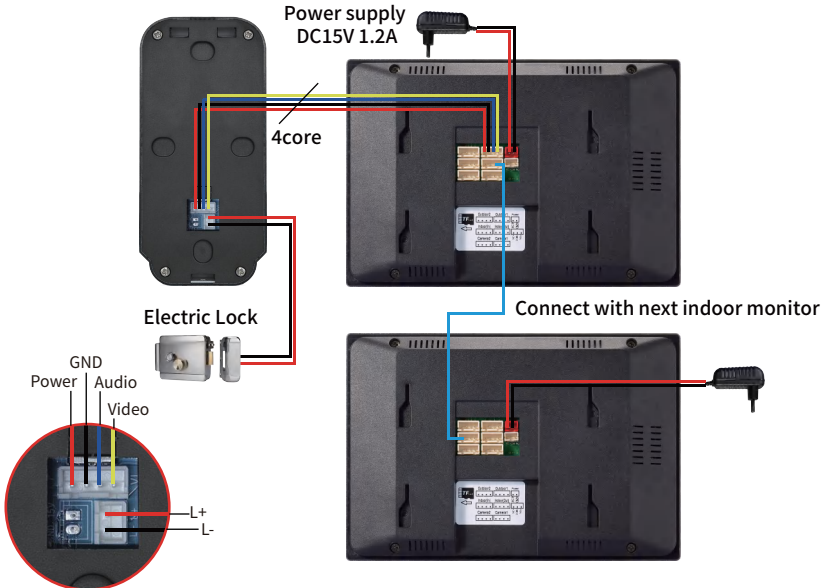


Figure 2

B. Access Control Power Supply Wiring Diagram

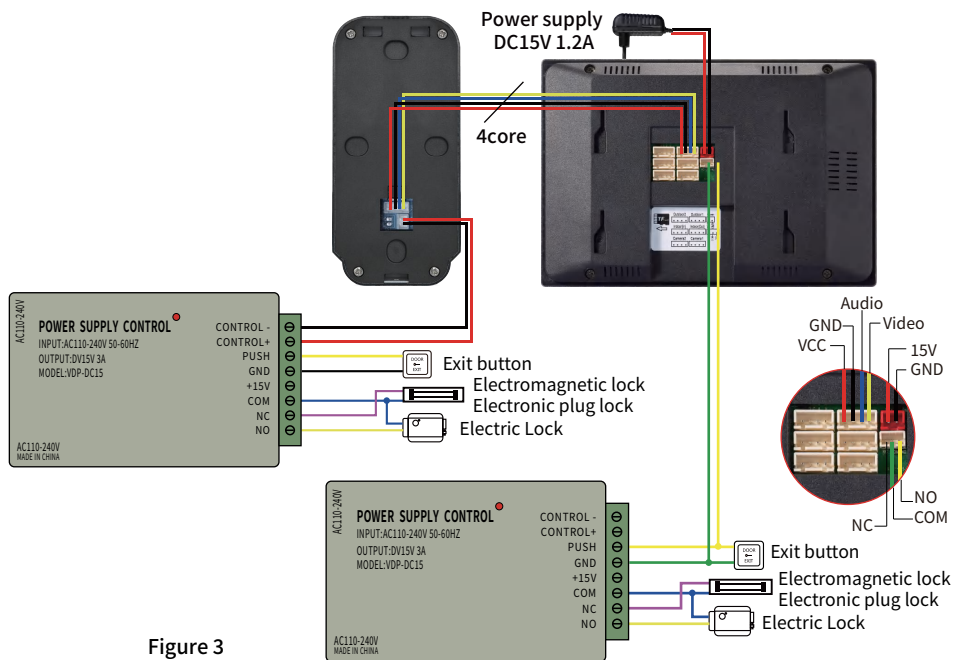
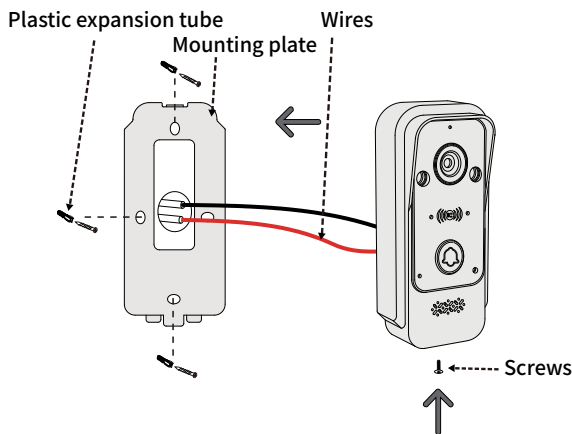


Figure 3

V.Installation Instructions

How to install the outdoor station:



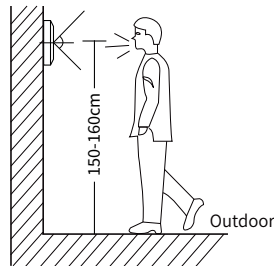
A.Installation & location of outdoor station

At first, determine the location and height for installing the outdoor station; the reference height is 150-160 cm from the camera center to ground.

B. Fix the outdoor station mounting plate

As shown in the figure: Take out the mounting plate ;open the package of screws to take out the plastic expansion tube and screws ;

- a). Drill a hole, bore diameter: about 6mm ;
- b). Fix the plastic expansion tube at the above hole ;
- c). Fix the mounting plate with screws.



C. Secure the Outdoor Station

- a). Remove the outdoor station and cables, and thread the cables through the outdoor station's mounting plate;
- b). Neatly arrange the cables and correctly connect them to the outdoor station;
- c). Hang the outdoor station horizontally on the already fixed mounting plate;
- d). Secure the outdoor station below with screws.

Note:

- a). During installation, please stay away from strong radiation devices such as TVs, computers, and VCRs;
- b). Do not disassemble without permission to avoid electric shock;
- c). Do not drop, shake, or impact the device, as it may damage the components;
- d). Choose the best installation position with a distance of 150cm from the horizontal line of sight;
- e). Turn off the power before installation;
- f). Maintain a distance of more than 60cm from AC power to avoid interference, and keep away from water, magnetic fields, and chemicals.

ZKTeco Industrial Park, No. 32, Industrial Road,
Tangxia Town, Dongguan, China.

Phone : +86 769 - 82109991

Fax : +86 755 - 89602394

www.zkteco.com

