

# F18 Pro

Fingerprint Access Control Standalone Terminal with Video Intercom and Intelligent Video Analytics



Compatible with  
 ZKBio CVAcess

Compatible with  
 ZKBio Time

Compatible with  
 Yoosee



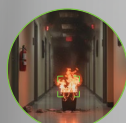
Video Intercom (Yoosee)



Person Detection



Vehicle Detection



Flame Detection (Supplementary use)



## Product Overview

ZKTeco's **F18 Pro** is a standalone biometric access terminal that pairs a 4 MP ultra-wide camera with AI-driven video analytics and cloud-based video intercom via the Yoosee app. It supports multi-factor authentication-fingerprint, RFID, and password-for fast, reliable entry. The camera captures QHD video (2560 × 1440) at up to 15 fps using H.265 compression. A built-in IR illuminator provides up to 5 m visibility in low light, automatically switching to IR black-and-white mode below 2 lux and returning to color above 6 lux.

F18 Pro offers AI-powered detection including person detection,, motion detection, vehicle detection, flame detection which delivers realtime, event-driven alerts through the Yoosee app. Event clips can be stored in the Gwell cloud or on a local TF card (up to 256 GB) for hybrid retention and remote playback. The Yoosee app also supports remote door unlocking and video intercom with two-way talking. F18 Pro offers comprehensive connectivity including dual-band Wi-Fi 6, Ethernet, and Bluetooth 5.0 that streamline deployment and mobile provisioning.

## Core Capabilities

- **4MP ultra-wide camera minimizes blind spots:** The 4 MP camera with an ultra-wide 154.8° diagonal FOV (134.7° H / 77.6° V) delivers comprehensive doorway coverage with minimal blind spots, pairing sharp imaging with visual event trails inside the Yoosee app for instant context.
- **Cloud-based visual intercom with bi-directional communication:** Use the Yoosee app for live view, two-way talk, and remote door release, while choosing where to keep footage-locally on a TF card (up to 256 GB) or securely in the Gwell cloud.
- **Smarter security with AI video analytics:** The Yoosee app's AI video analytics offer motion detection, person detection, vehicle detection, and flame detection (supplementary). It sends push notifications with text alerts and JPEG images to your mobile device.
- **Multi-factor authentication:** Authenticate via fingerprint, card, or password on the physical keypad-and combine factors for higher security; supports ID & IC at 125 kHz and 13.56 MHz.
- **Built for scale:** Handle up to 5,000 users with 0.3 second matching and 100,000 transaction logs, ensuring responsive performance and reliable audit history as your deployment grows.
- **Unified Access and Attendance Integration:** Integrate with ZKTeco's ZKBio CVAcess for access control or ZKBio Time for attendance via AC PUSH or TA PUSH switching, unifying door events, analytics, and mobile notifications in one centralized workflow.

## Specifications

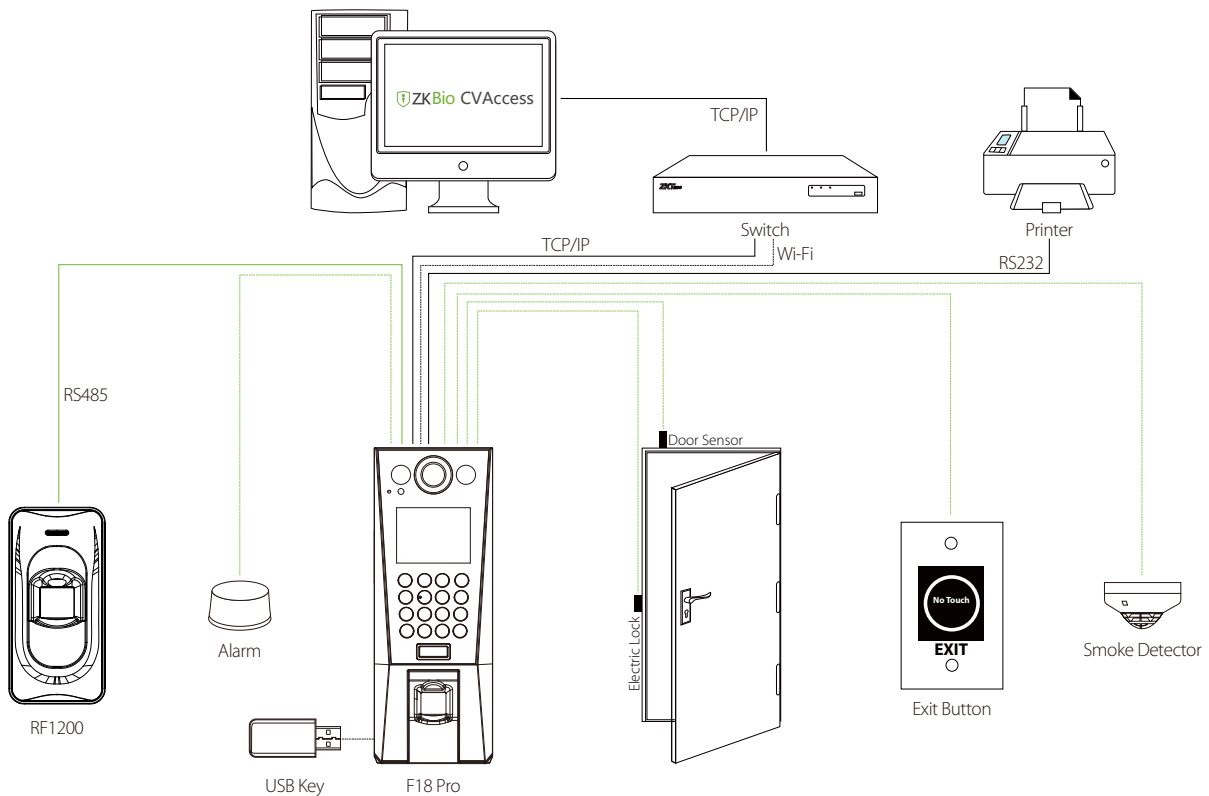
Model	F18 Pro
Display	2.4"@ TFT Color LCD Screen (720 x 1280)
Camera	4MP CMOS
Operation System	Linux

<b>Hardware</b>	CPU: 1GHz Dual Core RAM: 128MB; ROM: 256MB Speaker *2 8Ω 1W Microphone: *1 (Sensitivity: 42dB ±3dB) Fingerprint Sensor: ZK Optical Sensor TF Card: Max 256GB
<b>Authentication method</b>	Fingerprint / Card / Password (Physical Keypad )
<b>Fingerprint Template Capacity</b>	3,000 (1: N)
<b>Card Capacity</b>	5,000 (1: N)
<b>User Capacity</b>	5,000 (1: N)
<b>Transaction Capacity</b>	100,000
<b>Max. User Password Length</b>	6 to 8 Digits
<b>Fingerprint Verification Speed</b>	less than 0.3 sec
<b>False Acceptance Rate (FAR) %</b>	FAR ≤ 0.0001%
<b>False Rejection Rate (FRR) %</b>	FRR ≤ 0.01%
<b>Biometric Algorithm</b>	ZKFingerprint V10.0 / V13.0 (Default)
<b>Card Type</b>	ID & IC Card @ 125kHz & 13.56MHz (Standard)
<b>Communication</b>	TCP/IP*1 Wi-Fi (IEEE 802.11 b/g/n) @ 2.4 GHz Wiegand (Input & Output)*1 RS485: ZKTeco RS485 *1 RS232: only for Printer*1(Optional) USB Host*1 Aux Inputs *1, Electric Lock*1, Door Sensor*1, Exit Button*1, Alarm*1, Doorbell*1
<b>Standard Functions</b>	ADMS, DST, Up to 14-digit User ID, Access Levels, Groups, Holidays, Anti-Passback, Record Query, Tamper Switch Alarm, Multiple Verification Methods, Video Intercom(Yoosee), AC PUSH and TA PUSH Protocol Switch, HTTPS / SSH Backend Access, T9 Keyboard (Input)
<b>Infrared Supplement Light</b>	Auto infrared light ON: < 2 lux (B/W image) Auto infrared light OFF: > 6 lux Visible light mode: ≥ 6 lx (Color image)
<b>FOV</b>	Diagonal: 154.8°, Horizontal: 134.7°, Vertical: 77.6°
<b>Video Intercom and Video Cloud Storage</b>	
<b>Video Intercom</b>	Support Yoosee Mobile App (account capacity: 300 devices; share up to 10 users per device) Communication: Yoosee private protocol Functions: live view (10 mins per session; max. 2 concurrent viewers), bi-directional talk, remote unlock
<b>Cloud Service</b>	Gwell cloud for video storage and video analytics
<b>Video Storage</b>	Gwell Cloud Service
<b>Video Compression</b>	H.265, 15fps
<b>Visible Range</b>	Up to 5m (Day & Night; Infrared)
<b>Video Resolution</b>	2560 x 1440
<b>Video Viewing Angle</b>	154.8°(Diagonal), 77.6° (vertical), 134.7° (horizontal)
<b>Infrared Supplement Light</b>	Auto infrared light ON: < 2 lux (low light environment; B/W image) Auto infrared light OFF: > 6 lux Visible light mode: ≥ 6 lux (Day light; Color image)
<b>Intelligent Video Analytics (IVA)</b>	
<b>IVA Camera</b>	Person Detection/ Motion Detection / Vehicle Detection / Flame Detection
<b>IVA Video</b>	Intelligent retrieval, live view (online surveillance: max. 10mins), playback and backup. (Video Storage: Gwell cloud; local TF card up to 256 GB)
<b>Intelligent IVA Alarm</b>	Person Detection / Motion Detection / Vehicle Detection / Flame Detection
<b>Alarm Delay</b>	less than 3 sec
<b>Minimum Detection Area</b>	50×50 pixels

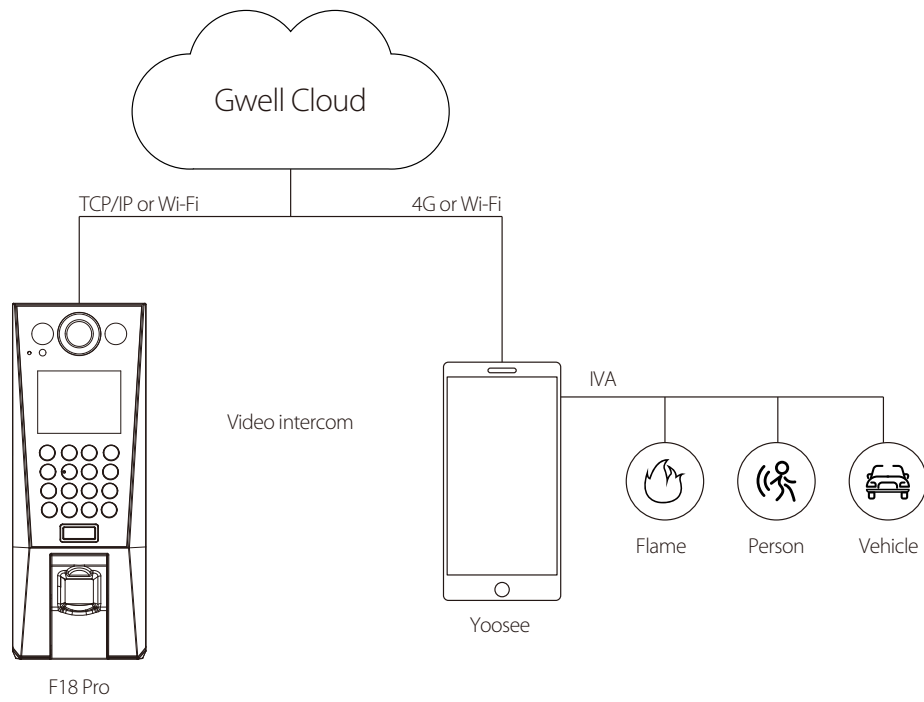
Sensitivity Adjustable	N/A
Networking & Interfaces	Wireless: Dual-band WiFi 6 (IEEE 802.11 a/b/g/n/ac/ax), 2.4/5GHz; Ethernet*1 Bluetooth 5.0
<b>General</b>	
Power Supply	DC 12V 3A
Operating Temperature	-10°C to 45°C (14 °F to 113 °F )
Operating Humidity	10% to 90% RH (Non-condensing)
Dimensions	214 mm*80 mm*45 mm (L*W*H)
Gross Weight	0.75 Kg
Net Weight	0.38 Kg
Supported Software	Software: ZKBio CVAccess / ZKBio Time Mobile App: Yoosee Cloud Storage: Gwell
Installation	Wall-mount (Compatible with Asian Gang-box / Single Gang-Box / European Gang-Box)
Housing Material	ABS (black)
Ingress Protection Rating	N/A
Certifications	ISO14001, ISO9001, CE, FCC, Equivalent to RoHS
Factory ID	AC01-F28H-12

\* Disclaimer: Flame detection for supplementary use only; not a replacement for code-compliant fire detection.

## Configuration



## Access Control



## IVA & Video intercom

### Dimensions(mm)

